

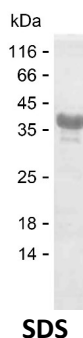
Product Name: Recombinant Human SYDE1 Protein
Catalog #: PEH8976



Summary

Name	SYDE1_HUMAN
Purity	Greater than 85% as determined by reducing SDS-PAGE
Endotoxin level	Please contact with the lab for this information
Tag	C-His
Accession #	Q6ZW31
Host	E.coli
Species	Human
Molecular Mass	20 kDa
Buffer	Phosphate buffered saline
Shipping	The product is shipped on dry ice/polar packs. Upon receipt, store it immediately at the temperature listed below.
Stability&Storage	Store at $\leq -70^{\circ}\text{C}$, stable for 6 months after receipt. Store at $\leq -70^{\circ}\text{C}$, stable for 3 months under sterile conditions after opening. Please minimize freeze-thaw cycles.
Sequence	RKKSDAKERG HPAQRPEPSP PEPEQAPPEG SQAGAE GPSS PEASRSPARG AYLQSLEPSS RRWVLGGAKP AEDTSLGPGV PGTGEPAGEI WYNPIPEEDP RPPAPEPPGP QPGSAESEGL APQGAAPASP PTKASRTKSP GPARRLSIKM KKLPELRRRL SLRGPRAGRE

image



Background

Alternative Names	Rho GTPase-activating protein SYDE1 (Synapse defective protein 1 homolog 1) (Protein syd-1 homolog 1)
--------------------------	---

Note

For Research Use Only , Not for Diagnostic Use

Product Name: Recombinant Human SYDE1 Protein
Catalog #: PEH8976

