

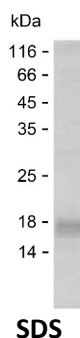
Product Name: Recombinant Human JADE3 Protein
Catalog #: PEH8918



Summary

Name	JADE3_HUMAN
Purity	Greater than 85% as determined by reducing SDS-PAGE
Endotoxin level	Please contact with the lab for this information
Tag	C-His
Accession #	Q92613
Host	E.coli
Species	Human
Molecular Mass	24 kDa
Buffer	Phosphate buffered saline
Shipping	The product is shipped on dry ice/polar packs. Upon receipt, store it immediately at the temperature listed below.
Stability&Storage	Store at $\leq -70^{\circ}\text{C}$, stable for 6 months after receipt. Store at $\leq -70^{\circ}\text{C}$, stable for 3 months under sterile conditions after opening. Please minimize freeze-thaw cycles.
Sequence	PAWRTPSSEC YHGQSLGKPL VLQAALHGQS SIGNGKSQPN SKFAKSNGLE GSWSGNVTQK DSSSEMFCNQ EPVFSPLVS QGSFRKSTVE HFSRSFKETT NRWVKNTEDL QCYVKPTKNM SPKEQFWGRQ VLRRSAGRAP YQENDGYCPD LELSDSEAES DGNKEKVRVR KDSSDRENPP HDSRRDCHGK

image



Background

Alternative Names Protein Jade-3 (Jade family PHD finger protein 3) (PHD finger protein 16)

Note

For Research Use Only , Not for Diagnostic Use

Product Name: Recombinant Human JADE3 Protein
Catalog #: PEH8918

