

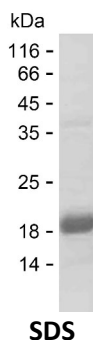
Product Name: Recombinant Human MTCL1 Protein
Catalog #: PEH8857



Summary

Name	MTCL1_HUMAN
Purity	Greater than 85% as determined by reducing SDS-PAGE
Endotoxin level	Please contact with the lab for this information
Tag	C-His
Accession #	Q9Y4B5
Host	E.coli
Species	Human
Molecular Mass	16 kDa
Buffer	Phosphate buffered saline
Shipping	The product is shipped on dry ice/polar packs. Upon receipt, store it immediately at the temperature listed below.
Stability&Storage	Store at $\leq -70^{\circ}\text{C}$, stable for 12 months after receipt. Store at $\leq -70^{\circ}\text{C}$, stable for 3 months under sterile conditions after opening. Please minimize freeze-thaw cycles.
Sequence	GEEFTEGEHP ETL SRLGELG VQGGHQADGP DHSDRGCGF PVGEHSPHSR VQIGDHSRLR QTADRGQPHK QVVENQQLFS AFKALLEDFR AELREDERAR LRLQQYASD KAAWDVEWAV

image



Background

Alternative Names Microtubule cross-linking factor 1 (Coiled-coil domain-containing protein 165) (PAR-1-interacting protein) (SOGA family member 2)

Note

For Research Use Only , Not for Diagnostic Use