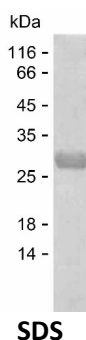


Summary

Name	LIPB2_HUMAN
Purity	Greater than 85% as determined by reducing SDS-PAGE
Endotoxin level	Please contact with the lab for this information
Tag	C-His
Accession #	Q8ND30
Host	E.coli
Species	Human
Molecular Mass	23 kDa
Buffer	Phosphate buffered saline
Shipping	The product is shipped on dry ice/polar packs. Upon receipt, store it immediately at the temperature listed below.
Stability&Storage	Store at $\leq -70^{\circ}\text{C}$, stable for 6 months after receipt. Store at $\leq -70^{\circ}\text{C}$, stable for 3 months under sterile conditions after opening. Please minimize freeze-thaw cycles.
Sequence	AQLQEQVALK DAEIERLHSQ LSRTAALHSE SHTERDQEIQ RLKMGMETLL LANEDKDRRI EELTGLLNQY RKVKEIVMVT QGPSERTLSI NEEPEGGFS KWNATNKDPE ELFKQEMPPR CSSPTVGPPP LPQKSLETRA QKKLSCSLED LRSESVDKCM DGNQPFVLE PKDSPFLAEH

image



Background

Alternative Names	Liprin-beta-2 (Protein tyrosine phosphatase receptor type f polypeptide-interacting protein-binding protein 2) (PTPRF-interacting protein-binding protein 2)
--------------------------	--

Note

Product Name: Recombinant Human PPFIBP2 Protein
Catalog #: PEH8843



For Research Use Only , Not for Diagnostic Use