

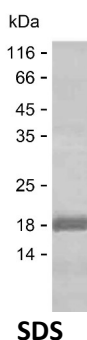
Product Name: Recombinant Human LRRCC1 Protein
Catalog #: PEH8834



Summary

Name	LRCC1_HUMAN
Purity	Greater than 85% as determined by reducing SDS-PAGE
Endotoxin level	Please contact with the lab for this information
Tag	C-His
Accession #	Q9C099
Host	E.coli
Species	Human
Molecular Mass	18 kDa
Buffer	Phosphate buffered saline
Shipping	The product is shipped on dry ice/polar packs. Upon receipt, store it immediately at the temperature listed below.
Stability&Storage	Store at $\leq -70^{\circ}\text{C}$, stable for 6 months after receipt. Store at $\leq -70^{\circ}\text{C}$, stable for 3 months under sterile conditions after opening. Please minimize freeze-thaw cycles.
Sequence	DCLQEKDEHI KRLQEKITEI EKCTQEQQLDE KSSQLDEVLE KLERHNERKE KLKQQLKGKE VELEEIRKAY STLNRKWHDK GELLCHLETQ VKEVKEKFEN KEKKLKAERD KSIELQKNAM EKLHSMDDAF

image



Background

Alternative Names Leucine-rich repeat and coiled-coil domain-containing protein 1 (Centrosomal leucine-rich repeat and coiled-coil domain-containing protein)

Note

For Research Use Only , Not for Diagnostic Use