

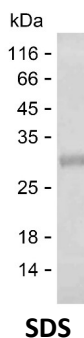
Product Name: Recombinant Human KLC2 Protein
Catalog #: PEH8822



Summary

Name	KLC2_HUMAN
Purity	Greater than 85% as determined by reducing SDS-PAGE
Endotoxin level	Please contact with the lab for this information
Tag	N-His
Accession #	Q9H0B6
Host	E.coli
Species	Human
Molecular Mass	31 kDa
Buffer	Phosphate buffered saline
Shipping	The product is shipped on dry ice/polar packs. Upon receipt, store it immediately at the temperature listed below.
Stability&Storage	Store at $\leq -70^{\circ}\text{C}$, stable for 12 months after receipt. Store at $\leq -70^{\circ}\text{C}$, stable for 3 months under sterile conditions after opening. Please minimize freeze-thaw cycles.
Sequence	CKQALDLEK TSGHDHPDVA TMLNILALVY RDQNKYKEAA HLLNDALAIR EKT LGKDHPA VAATLNNLAV LYGKRGKYKE AEPLCKRALE IREKVLGKFH PDVAKQLSNL ALLCQNQGKA EEVEYYRRA LEIYATRLGP DDPNVAKTKN NLASCYLKQG KYQDAETLYK EILTRAHEKE FGSVNGDNKP IWMHAEEREE SKDKRRDSAP YGEYGSWYKA CKVDSPTVNT TLRSLGALYR RQGKLEAAHT LEDCASRNRK

image



Background

Alternative Names Kinesin light chain 2 (KLC 2)

Product Name: Recombinant Human KLC2 Protein
Catalog #: PEH8822



Note

For Research Use Only , Not for Diagnostic Use