

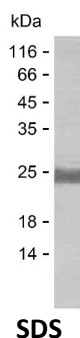
Product Name: Recombinant Human JOSD1 Protein
Catalog #: PEH8816



Summary

Name	JOS1_HUMAN
Purity	Greater than 85% as determined by reducing SDS-PAGE
Endotoxin level	Please contact with the lab for this information
Tag	C-His
Accession #	Q15040
Host	E.coli
Species	Human
Molecular Mass	24 kDa
Buffer	Phosphate buffered saline
Shipping	The product is shipped on dry ice/polar packs. Upon receipt, store it immediately at the temperature listed below.
Stability&Storage	Store at $\leq -70^{\circ}\text{C}$, stable for 6 months after receipt. Store at $\leq -70^{\circ}\text{C}$, stable for 3 months under sterile conditions after opening. Please minimize freeze-thaw cycles.
Sequence	AKSESELELPQ AAPPQIYHEK QRRELCALHA LNNVFQDSNA FTRDTLQEIF QRLSPNTMVT PHKKSMLGNG NYDVNVIMAA LQTKGYEAVW WDKRRDVGVI ALTNVMGFIM NLPSSLCWGP LKLPLKRQHW ICVREVGGAY YNLDSKLMKP EWIGGESELR KFLKHHLRGK NCELLLVPE EVEAHQSWRT

image



Background

Alternative Names Josephin-1 (EC 3.4.19.12) (Josephin domain-containing protein 1)

Note

For Research Use Only , Not for Diagnostic Use

Product Name: Recombinant Human JOSD1 Protein
Catalog #: PEH8816

