

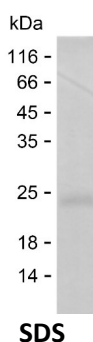
Product Name: Recombinant Human INTS6L Protein
Catalog #: PEH8810



Summary

Name	INT6L_HUMAN
Purity	Greater than 85% as determined by reducing SDS-PAGE
Endotoxin level	Please contact with the lab for this information
Tag	C-His
Accession #	Q5JSJ4
Host	E.coli
Species	Human
Molecular Mass	19 kDa
Buffer	Phosphate buffered saline
Shipping	The product is shipped on dry ice/polar packs. Upon receipt, store it immediately at the temperature listed below.
Stability&Storage	Store at $\leq -70^{\circ}\text{C}$, stable for 12 months after receipt. Store at $\leq -70^{\circ}\text{C}$, stable for 3 months under sterile conditions after opening. Please minimize freeze-thaw cycles.
Sequence	ATIIHDGHEE KMENGQITPD GFLKSAPSE LINMTGDLMP PNQVDSLSD FTSLSKDGLI QKPGSNAFVG GAKNCSLSVD DQKDPVASTL GAMPNTLQIT PAMAQGINAD IKHQLMKEVR KFGKRYERIF ILLEEVQGPL EMKKQFVEFT

image



Background

Alternative Names Integrator complex subunit 6-like (Protein DDX26B)

Note

For Research Use Only , Not for Diagnostic Use