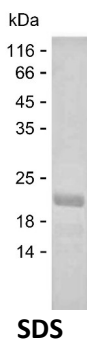


Summary

| | |
|------------------------------|---|
| Name | CYTSA_HUMAN |
| Purity | Greater than 85% as determined by reducing SDS-PAGE |
| Endotoxin level | Please contact with the lab for this information |
| Tag | C-His |
| Accession # | Q69YQ0 |
| Host | E.coli |
| Species | Human |
| Molecular Mass | 21 kDa |
| Buffer | Phosphate buffered saline |
| Shipping | The product is shipped on dry ice/polar packs. Upon receipt, store it immediately at the temperature listed below. |
| Stability&Storage | Store at $\leq -70^{\circ}\text{C}$, stable for 12 months after receipt. Store at $\leq -70^{\circ}\text{C}$, stable for 3 months under sterile conditions after opening. Please minimize freeze-thaw cycles. |
| Sequence | LEQRYMDLAE NARFEREQLL GVQQHLSNTL KMAEQDNKEA QEMIGALKER SHHMERIIES EQKGKAALAA TLEEYKATVA SDQIEMNRLK AQLENEKQKV AELYSIHNSG DKSDIQDLLE SVRLDKEKAE TLASSLQEDL AHTRNDANRL QDAIAKVEDE |

image



Background

| | |
|--------------------------|--|
| Alternative Names | Cytospin-A (Renal carcinoma antigen NY-REN-22) (Sperm antigen with calponin homology and coiled-coil domains 1-like) (SPECC1-like protein) |
|--------------------------|--|

Note

For Research Use Only , Not for Diagnostic Use

Product Name: Recombinant Human SPECC1L Protein
Catalog #: PEH8728

