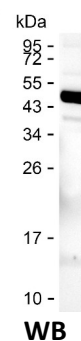
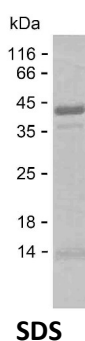


Summary

Name	CSPP1_HUMAN
Purity	Greater than 85% as determined by reducing SDS-PAGE
Endotoxin level	Please contact with the lab for this information
Tag	C-His
Accession #	Q1MSJ5
Host	E.coli
Species	Human
Molecular Mass	38 kDa
Buffer	Phosphate buffered saline
Shipping	The product is shipped on dry ice/polar packs. Upon receipt, store it immediately at the temperature listed below.
Stability&Storage	Store at $\leq -70^{\circ}\text{C}$, stable for 6 months after receipt. Store at $\leq -70^{\circ}\text{C}$, stable for 3 months under sterile conditions after opening. Please minimize freeze-thaw cycles.
Sequence	QNELKITSQDQ VINSGLIFED KPKPSKQSLQ SYQEALQQQI REREERRKKE REEKEEYEAQ LEAEMRTYNP WGKGGGGAPL RDAKGNLITD LNRMHRQNID AYHNPDARTY EDKRAVVSLD PNLATSNAEN LEDAANKSSG HMQTQSSPFA RGNVFGEPPT ELQIKQQELY KNFLRFQIEE KKQREEAERE RLRIAEKEE RRLAEQRARI QQEYEEQEK KREKEEQRL KNEEHIRLAE ERQKEAERKK KEEEKYNLQ LQHYCERDNL IGEETKHMQRQ PSPIVPALQN KIASKLQRPP SVDSIIRFSI

image



Background

Alternative Names Centrosome and spindle pole-associated protein 1

Product Name: Recombinant Human CSPP1 Protein
Catalog #: PEH8714



Note

For Research Use Only , Not for Diagnostic Use