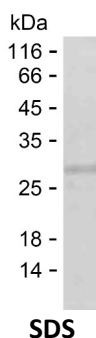


Summary

Name	CAN15_HUMAN
Purity	Greater than 85% as determined by reducing SDS-PAGE
Endotoxin level	Please contact with the lab for this information
Tag	C-His
Accession #	O75808
Host	E.coli
Species	Human
Molecular Mass	20 kDa
Buffer	Phosphate buffered saline
Shipping	The product is shipped on dry ice/polar packs. Upon receipt, store it immediately at the temperature listed below.
Stability&Storage	Store at $\leq -70^{\circ}\text{C}$, stable for 6 months after receipt. Store at $\leq -70^{\circ}\text{C}$, stable for 3 months under sterile conditions after opening. Please minimize freeze-thaw cycles.
Sequence	PAILGEPKGS CQEEAGPVRT AGLVATEPAR GQCEDKDEEE KEEQEEEEGA AEPRGGWACP RCTLHNTVA SSCSVCGGPR RLSLPRIPPE ALVVPEVVAP AGFHVVPAAP PPGLPGEGAE ANPPATSQGP AAPEPPRPV PFSFSTLQ NNPVRSRRE VPPQLQPPV EAAQPSPSAG

image



Background

Alternative Names Calpain-15 (EC 3.4.22.-) (Small optic lobes homolog)

Note

For Research Use Only , Not for Diagnostic Use

Product Name: Recombinant Human CAPN15 Protein
Catalog #: PEH8702

