

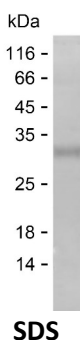
Product Name: Recombinant Human CLPX Protein
Catalog #: PEH8675



Summary

Name	CLPX_HUMAN
Purity	Greater than 85% as determined by reducing SDS-PAGE
Endotoxin level	Please contact with the lab for this information
Tag	C-His
Accession #	O76031
Host	E.coli
Species	Human
Molecular Mass	26 kDa
Buffer	Phosphate buffered saline
Shipping	The product is shipped on dry ice/polar packs. Upon receipt, store it immediately at the temperature listed below.
Stability&Storage	Store at $\leq -70^{\circ}\text{C}$, stable for 6 months after receipt. Store at $\leq -70^{\circ}\text{C}$, stable for 3 months under sterile conditions after opening. Please minimize freeze-thaw cycles.
Sequence	PAYFASKDGI SKDGS GDGNK KSASEGSSKK SGSGNSGKGG NQLRCPKCGD LCTHVETFVS STRFVKCEKC HFFVVLSEA DSKKSIKEP ESAAEAVKLA FQQKPPPPPK KIYNYLDKYV VGQSF AKKVL SVAVYNHYKR IYNNIPANLR QQAEEVEKQTS LTPRELEIRR REDEYRFTKL LQIAGISPHG NALGASMQQQ VNQQIPQEKR GGEVLDSSHD

image



Background

Alternative Names ATP-dependent Clp protease ATP-binding subunit clpX-like, mitochondrial

Note

Product Name: Recombinant Human CLPX Protein
Catalog #: PEH8675



For Research Use Only , Not for Diagnostic Use