

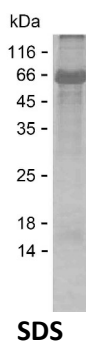
Product Name: Recombinant Human ALS2CL Protein
Catalog #: PEH8654



Summary

Name	AL2CL_HUMAN
Purity	Greater than 85% as determined by reducing SDS-PAGE
Endotoxin level	Please contact with the lab for this information
Tag	C-His
Accession #	Q60I27
Host	E.coli
Species	Human
Molecular Mass	65 kDa
Buffer	Phosphate buffered saline
Shipping	The product is shipped on dry ice/polar packs. Upon receipt, store it immediately at the temperature listed below.
Stability&Storage	Store at $\leq -70^{\circ}\text{C}$, stable for 6 months after receipt. Store at $\leq -70^{\circ}\text{C}$, stable for 3 months under sterile conditions after opening. Please minimize freeze-thaw cycles.
Sequence	TLFGNLQSFM KQELDQAVAT QALWHTLRGR LRDVLCTPAH RLLQDSQDVP VTVAPLRAER VLLFDDALVL LQGHNVHTFD LKLWVDPGQ DGCTFHLLTP EEEFSCAKD SQGQAVWQWK VTWAVHQALH GKKDFPVLGA GLEPSQPPDC RCAEYTFQAE GRLCQATYEG EWCRGRPHGK GTLKWPDGRN HVGNFQCQGLE HGFGIRLLPQ ASEDKFDCYK CHWREGSMCG YGICEYSTDE VYKGYFQEGL RHGFGVLESG PQAPQPFRTY GHWERGQRSY YGIEEDGDRG ERYIGMWQAG QRHGPGVMVT QAGVCYQGTG QADKTVGPGI LLEDDSLIE GTFTRDLTLM GKGKVTFPNG FTLEGSFGSG AGRGLHTQGV LDTAALPPDP SSTCKRQLGV GAFPVESRWQ GVYSPFRDFV CAGCPRDLQE ALLGFDVQSS RELRRSQDYL SCERTHPEDS VGSMEDELEE LLQHREPKAL QLYLRKALSN SLHPLGKLLR TLMLTFQATY AGVGANKHLQ ELAQEEVKQH AQELWAAYRG LLRVALERKG QALEEDEDTE TRDLQVHGLV

image



Product Name: Recombinant Human ALS2CL Protein
Catalog #: PEH8654



Background

Alternative Names ALS2 C-terminal-like protein

Note

For Research Use Only , Not for Diagnostic Use