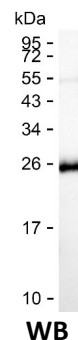
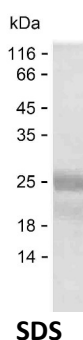


## Summary

<b>Name</b>	PLCH2_HUMAN
<b>Purity</b>	Greater than 85% as determined by reducing SDS-PAGE
<b>Endotoxin level</b>	Please contact with the lab for this information
<b>Tag</b>	C-His
<b>Accession #</b>	O75038
<b>Host</b>	E.coli
<b>Species</b>	Human
<b>Molecular Mass</b>	16 kDa
<b>Buffer</b>	Phosphate buffered saline
<b>Shipping</b>	The product is shipped on dry ice/polar packs. Upon receipt, store it immediately at the temperature listed below.
<b>Stability&amp;Storage</b>	Store at $\leq -70^{\circ}\text{C}$ , stable for 12 months after receipt. Store at $\leq -70^{\circ}\text{C}$ , stable for 3 months under sterile conditions after opening. Please minimize freeze-thaw cycles.
<b>Sequence</b>	AEEGEVSDDED SADEIDDDCK LLNGDASTNR KRVENTAKRK LDSLIKESKI RDCEDPNNFS VSTLSPSGKL GRKSKAEEDV ESGEDAGASR RNgRLVVGsf SRRKKKGSKL KKAASVEEGD EGQDSPGGQS

## image



## Background

<b>Alternative Names</b>	1-phosphatidylinositol 4,5-bisphosphate phosphodiesterase eta-2 (EC 3.1.4.11) (Phosphoinositide phospholipase C-eta-2) (Phosphoinositide phospholipase C-like 4) (PLC-L4) (Phospholipase C-like protein 4) (Phospholipase C-eta-2) (PLC-eta2)
--------------------------	-----------------------------------------------------------------------------------------------------------------------------------------------------------------------------------------------------------------------------------------------

## Note

**Product Name: Recombinant Human PLCH2 Protein**  
**Catalog #: PEH8639**



---

For Research Use Only , Not for Diagnostic Use