

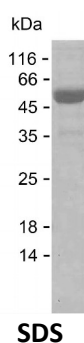
**Product Name: Recombinant Human WAPL Protein**  
**Catalog #: PEH8636**



## Summary

<b>Name</b>	WAPL_HUMAN
<b>Purity</b>	Greater than 85% as determined by reducing SDS-PAGE
<b>Endotoxin level</b>	Please contact with the lab for this information
<b>Tag</b>	C-His
<b>Accession #</b>	Q7Z5K2
<b>Host</b>	E.coli
<b>Species</b>	Human
<b>Molecular Mass</b>	41 kDa
<b>Buffer</b>	Phosphate buffered saline
<b>Shipping</b>	The product is shipped on dry ice/polar packs. Upon receipt, store it immediately at the temperature listed below.
<b>Stability&amp;Storage</b>	Store at $\leq -70^{\circ}\text{C}$ , stable for 6 months after receipt. Store at $\leq -70^{\circ}\text{C}$ , stable for 3 months under sterile conditions after opening. Please minimize freeze-thaw cycles.
<b>Sequence</b>	RKGGNGSSKF DEVFSNKRTT LSTKWGETTF MAKLGQKRPN FKPDIQEIPK KPKVEEESTG DPFGFSDSDE SLPVSSKNLA QVKCSSYSES SEAAQLEEV SVLEANSKIS HVVVEDTVVS DKCFPLEDTL LGKEKSTNRI VEDDASISSC NKLITSDKVE NFHEEHEKNS HHHKKNADDS TKKPNAETTV ASEIKETNDT WNSQFGKRPE SPSEISPIKG SVRTGLFEWD NDFEDIRSED CILSLSDPL LEMKDDDFKN RLENLNEAIE EDIVQSVLRP TNCRTYCRAN KTKSSQGASN FDKLMDGTSQ ALAKANSESS KDGLNQAKKG GVSCGTSFRG TVGRTRDYTV

## image



## Background

**Alternative Names** Wings apart-like protein homolog (Friend of EBNA2 protein) (WAPL cohesin release factor)

**Product Name: Recombinant Human WAPL Protein**  
**Catalog #: PEH8636**

---



**Note**

For Research Use Only , Not for Diagnostic Use