

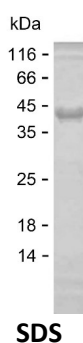
**Product Name: Recombinant Human EFL1 Protein**  
**Catalog #: PEH8516**



## Summary

<b>Name</b>	EFL1_HUMAN
<b>Purity</b>	Greater than 85% as determined by reducing SDS-PAGE
<b>Endotoxin level</b>	Please contact with the lab for this information
<b>Tag</b>	C-His
<b>Accession #</b>	Q7Z2Z2
<b>Host</b>	E.coli
<b>Species</b>	Human
<b>Molecular Mass</b>	40 kDa
<b>Buffer</b>	Phosphate buffered saline
<b>Shipping</b>	The product is shipped on dry ice/polar packs. Upon receipt, store it immediately at the temperature listed below.
<b>Stability&amp;Storage</b>	Store at $\leq -70^{\circ}\text{C}$ , stable for 12 months after receipt. Store at $\leq -70^{\circ}\text{C}$ , stable for 3 months under sterile conditions after opening. Please minimize freeze-thaw cycles.
<b>Sequence</b>	KQQKVAVIHQ MKEDQSKIPE GIQVDSGLI TITTPNKLAT LSVRAMPLPE EVTQILEENS DLIRSMEQLT SSLNEGENTH MIHQKTQEKI WEFK GKLEQH LTGRRWRNIV DQIWSFGPRK CGPNILVNKS EDFQNSVWTG PADKASKEAS RYRDLGNSIV SGFQLATLSG PMCEEPLMGV CFVLEKWDLS KFEEQGASDL AKEGQEENET CSGGNENQEL QDGCSEAFEK RTSQKGESPL TDCYGPFSGQ LIATMKEACR YALQVKPQRL MAAMYTCDIM ATGDVLGRVY AVLSKREGRV LQEEMKEGTD MFIKAVLPV AESFGFADEI RKRTSGLASP

## image



## Background

<b>Alternative Names</b>	Elongation factor-like GTPase 1 (Elongation factor Tu GTP-binding domain-containing protein 1) (Elongation factor-like 1) (Protein FAM42A)
--------------------------	--

**Product Name: Recombinant Human EFL1 Protein**  
**Catalog #: PEH8516**

---



**Note**

For Research Use Only , Not for Diagnostic Use