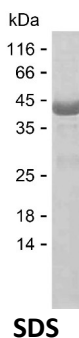


Summary

Name	CAPR1_HUMAN
Purity	Greater than 85% as determined by reducing SDS-PAGE
Endotoxin level	Please contact with the lab for this information
Tag	C-His
Accession #	Q14444
Host	E.coli
Species	Human
Molecular Mass	34 kDa
Buffer	Lyophilized from Phosphate buffered saline
Shipping	The product is shipped on dry ice/polar packs. Upon receipt, store it immediately at the temperature listed below.
Stability&Storage	Store at $\leq -70^{\circ}\text{C}$, stable for 12 months after receipt. Store at $\leq -70^{\circ}\text{C}$, stable for 3 months under sterile conditions after opening. Please minimize freeze-thaw cycles.
Sequence	HPATGTGAVQ TEAMKQILGV IDKKLRNLEK KKGKLDYQE RMNKGRLNQ DQLDAVSKYQ EVTNNLEFAK ELQRSFMALS QDIQKTIKKT ARREQLMREE AEQKRLKTVL ELQYVLDKLG DDEVRTDLKQ GLNGVPILSE EELSLLDEFY KLVDPERDMS LRLNEQYEHA SIHLWDLLEG KEKPVCSTTY KVLKEIVERV FQSNYFDSTH NHQNGLCSEE EAASAPAVED QVPEAEPEPA EETEYQSEVE STEYVNRQFM AETQFTSGEK EQVDEWTVET

image



Background

Alternative Names	Caprin-1 (Cell cycle-associated protein 1) (Cytoplasmic activation- and proliferation-associated protein 1) (GPI-anchored membrane protein 1) (GPI-anchored protein p137) (GPI-p137) (p137GPI) (Membrane component
--------------------------	--

Product Name: Recombinant Human CAPRIN1 Protein
Catalog #: PEH8482



chromosome 11 surface marker 1) (RNA granule protein 105)

Note

For Research Use Only , Not for Diagnostic Use