

**Product Name: Recombinant Human AP5B1 Protein**  
**Catalog #: PEH8468**



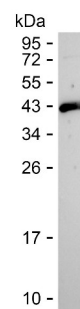
## Summary

<b>Name</b>	AP5B1_HUMAN
<b>Purity</b>	Greater than 85% as determined by reducing SDS-PAGE
<b>Endotoxin level</b>	Please contact with the lab for this information
<b>Tag</b>	C-His
<b>Accession #</b>	Q2VPB7
<b>Host</b>	E.coli
<b>Species</b>	Human
<b>Molecular Mass</b>	40 kDa
<b>Buffer</b>	Lyophilized from Phosphate buffered saline
<b>Shipping</b>	The product is shipped on dry ice/polar packs.Upon receipt, store it immediately at the temperature listed below.
<b>Stability&amp;Storage</b>	Store at $\leq -70^{\circ}\text{C}$ , stable for 12 months after receipt.Store at $\leq -70^{\circ}\text{C}$ , stable for 3 months under sterile conditions after opening. Please minimize freeze-thaw cycles.
<b>Sequence</b>	VVLRQVVVSR PGRDEALCWH LQMLAKVADG DAQSATLNFL QAAAAHCTNW DLQQGLLRVC RALLRAGVRG GLVDLLQVLA RQLEDPDGRD HARLYILLA HLAAPKLGVA LGPSLAAPAL ASSLVAENQG FVAALMVQEA PALVRLSLGS HRVKGPLPVL KLQPEALEPI YSLELRFVE GQLYAPLEAV HVPCLCPGRP ARPLLLPLQP RCPAPARLDV HALYTTSTGL TCHAHLPPLF VNFADLFLPF PQPPEGAGLG FFEELWDSCL PEGAESRVWC PLGPQGLEGL VSRHLEPFV VAQPPTSICV AIHLPPDSKL LLRLEAALAD GVPVALRTDD

## image



SDS



WB

## Background

<b>Alternative Names</b>	AP-5 complex subunit beta-1 (Adaptor-related protein complex 5 beta subunit) (Beta5)
--------------------------	--

**Product Name: Recombinant Human AP5B1 Protein**  
**Catalog #: PEH8468**

---



**Note**

For Research Use Only , Not for Diagnostic Use