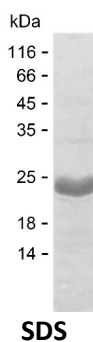


Summary

Name	MARK1_HUMAN
Purity	Greater than 85% as determined by reducing SDS-PAGE
Endotoxin level	Please contact with the lab for this information
Tag	C-His
Accession #	Q9P0L2
Host	E.coli
Species	Human
Molecular Mass	20 kDa
Buffer	Phosphate buffered saline
Shipping	The product is shipped on dry ice/polar packs. Upon receipt, store it immediately at the temperature listed below.
Stability&Storage	Store at $\leq -70^{\circ}\text{C}$, stable for 6 months after receipt. Store at $\leq -70^{\circ}\text{C}$, stable for 3 months under sterile conditions after opening. Please minimize freeze-thaw cycles.
Sequence	KPYTEPDFD NDTKRIDIMV TMGFARDEIN DALINQKYDE VMATYILLGR KPPEFEGGES LSSGNLCQRS RPSSDLNNSL LQSPAHLKVQ RSISANQKQR RFSDHAGPSI PPAVSYTKRP QANSVESEKQ EEWDKDVARK LGSTTVGSKS EMTASPLVGP

image



Background

Alternative Names	Serine/threonine-protein kinase MARK1 (EC 2.7.11.1) (EC 2.7.11.26) (MAP/microtubule affinity-regulating kinase 1) (PAR1 homolog c) (Par-1c) (Par1c)
--------------------------	---

Note

Product Name: Recombinant Human MARK1 Protein
Catalog #: PEH8445



For Research Use Only , Not for Diagnostic Use