

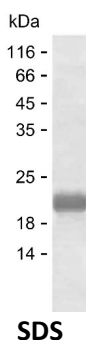
Product Name: Recombinant Human CDC6 Protein
Catalog #: PEH8428



Summary

Name	CDC6_HUMAN
Purity	Greater than 85% as determined by reducing SDS-PAGE
Endotoxin level	Please contact with the lab for this information
Tag	C-His
Accession #	Q99741
Host	E.coli
Species	Human
Molecular Mass	17 kDa
Buffer	Phosphate buffered saline
Shipping	The product is shipped on dry ice/polar packs. Upon receipt, store it immediately at the temperature listed below.
Stability&Storage	Store at $\leq -70^{\circ}\text{C}$, stable for 6 months after receipt. Store at $\leq -70^{\circ}\text{C}$, stable for 3 months under sterile conditions after opening. Please minimize freeze-thaw cycles.
Sequence	TISFPKRKLS RALNKAKNSS DAKLEPTNVQ TVTCSRVKA LPLSPRKRLG DDNLCNTPHL PPCSPPKQGK KENGPPHSHT LKGRRLVFDN QLTIKSPSKR ELAKVHQNKI LSSVRKSQEI TTNSEQRCPL

image



Background

Alternative Names Cell division control protein 6 homolog (CDC6-related protein) (Cdc18-related protein) (HsCdc18) (p62(cdc6)) (HsCDC6)

Note

For Research Use Only , Not for Diagnostic Use