

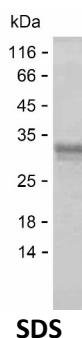
Product Name: Recombinant Human ASPM Protein
Catalog #: PEH8406



Summary

Name	ASPM_HUMAN
Purity	Greater than 85% as determined by reducing SDS-PAGE
Endotoxin level	Please contact with the lab for this information
Tag	C-His
Accession #	Q8IZT6
Host	E.coli
Species	Human
Molecular Mass	24 kDa
Buffer	Lyophilized from Phosphate buffered saline
Shipping	The product is shipped on dry ice/polar packs. Upon receipt, store it immediately at the temperature listed below.
Stability&Storage	Store at $\leq -70^{\circ}\text{C}$, stable for 12 months after receipt. Store at $\leq -70^{\circ}\text{C}$, stable for 3 months under sterile conditions after opening. Please minimize freeze-thaw cycles.
Sequence	KFSAVQDISS HSHNKQPKRR PILSATVTKR KATCTRENQT EINKPKAKRC LNSAVGEHEK VINNQKEKED FHSYLPIDP ILSKSKSYKN EVTPSSTTAS VARRKSDGS MEDANVRVAI TEHTEVREIK RIHFSPSEPK TSAVKKTKNV TTPISKRISN REKLNLKKKT DLSIFRTPIS KTNKRTKPII

image



Background

Alternative Names Abnormal spindle-like microcephaly-associated protein (Abnormal spindle protein homolog) (Asp homolog)

Note

For Research Use Only , Not for Diagnostic Use

Product Name: Recombinant Human ASPM Protein
Catalog #: PEH8406

