

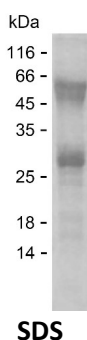
Product Name: Recombinant Human WASHC5 Protein
Catalog #: PEH8382



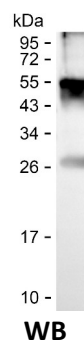
Summary

Name	WASC5_HUMAN
Purity	Greater than 85% as determined by reducing SDS-PAGE
Endotoxin level	Please contact with the lab for this information
Tag	C-His
Accession #	Q12768
Host	E.coli
Species	Human
Molecular Mass	27 kDa
Buffer	Phosphate buffered saline
Shipping	The product is shipped on dry ice/polar packs. Upon receipt, store it immediately at the temperature listed below.
Stability&Storage	Store at $\leq -70^{\circ}\text{C}$, stable for 6 months after receipt. Store at $\leq -70^{\circ}\text{C}$, stable for 3 months under sterile conditions after opening. Please minimize freeze-thaw cycles.
Sequence	VDAWEPYKAA K TALNNTLDL SNVREQASRY ATVSERVHAQ VQQFLKEGYL REEMVLDNIP KLLNCLRDCN VAIRWMLMLHT ADSACDPNNK RLRQIKDQIL TDSRYNPRIL FQLLLDTAQF EFILKEMFKQ MLSEKQTKWE HYKKEGSERM TELADVFSGV KPLTRVEKNE NLQAWFREIS KQILSLNYDD STAAGRKT VQ LIQALEEVQE

image



SDS



WB

Background

Alternative Names WASH complex subunit 5 (Strumpellin) (WASH complex subunit strumpellin)

Note

Product Name: Recombinant Human WASHC5 Protein
Catalog #: PEH8382



For Research Use Only , Not for Diagnostic Use