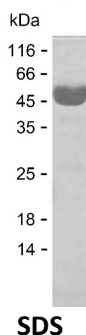


## Summary

|                              |  |
|------------------------------|--|
| <b>Name</b>                  | 2A5A_HUMAN   |
| <b>Purity</b>                | Greater than 85% as determined by reducing SDS-PAGE  |
| <b>Endotoxin level</b>       | Please contact with the lab for this information   |
| <b>Tag</b>                   | C-His  |
| <b>Accession #</b>           | Q15172   |
| <b>Host</b>                  | E.coli   |
| <b>Species</b>               | Human  |
| <b>Molecular Mass</b>        | 55 kDa   |
| <b>Buffer</b>                | Phosphate buffered saline  |
| <b>Shipping</b>              | The product is shipped on dry ice/polar packs. Upon receipt, store it immediately at the temperature listed below.   |
| <b>Stability&amp;Storage</b> | Store at $\leq -70^{\circ}\text{C}$ , stable for 6 months after receipt. Store at $\leq -70^{\circ}\text{C}$ , stable for 3 months under sterile conditions after opening. Please minimize freeze-thaw cycles.   |
| <b>Sequence</b>              | VDGFTRKSVR KAQRQKRSQG SSQFRSQGSQ AELHPLPQLK DATSNEQQEL<br>FCQKLQQCCI LDFDMDSVSD LKSKEIKRAT LNELVEYVST NRGVIVESAY<br>SDIVKMISAN IFRTLPPSDN PDFDPEEDEP TLEASWPHIQ LVEFFLRFL<br>ESPDFQPSIA KRYIDQKFVQ QLLELFDESD PRERDFLKTV LHRIYGKFLG<br>LRAFIRKQIN NIFLRFIYET EHFNGVAELL EILGSIINGF ALPLKAEHKQ<br>FLMKVLIPMH TAKGLALFHA QLAYCVVQFL EKDTTLTEPV IRGLLKFWPK<br>TCSQKEVMFL GEIEEILDVI EPTQFKKIEE PLFKQISKCV SSSHQVAER<br>ALYFWNNEYI LSLIEENIDK ILPIMFASLY KISKEHWNPT IVALVYNVLK<br>TLMEMNGKLF DDLTSSYKAE RQREKKKELE REELWKKLEE LKLLKALEKQ |

## image



## Background

**Product Name: Recombinant Human PPP2R5A Protein**  
**Catalog #: PEH8287**



---

**Alternative Names**

Serine/threonine-protein phosphatase 2A 56 kDa regulatory subunit alpha isoform (PP2A B subunit isoform B'-alpha) (PP2A B subunit isoform B56-alpha) (PP2A B subunit isoform PR61-alpha) (PR61alpha) (PP2A B subunit isoform R5-alpha)

**Note**

For Research Use Only , Not for Diagnostic Use