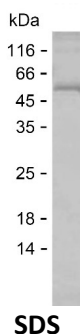


Summary

Name	PDE6A_HUMAN
Purity	Greater than 85% as determined by reducing SDS-PAGE
Endotoxin level	Please contact with the lab for this information
Tag	C-His
Accession #	P16499
Host	E.coli
Species	Human
Molecular Mass	48 kDa
Buffer	Lyophilized from Phosphate buffered saline
Shipping	The product is shipped on dry ice/polar packs. Upon receipt, store it immediately at the temperature listed below.
Stability&Storage	Store at $\leq -70^{\circ}\text{C}$, stable for 12 months after receipt. Store at $\leq -70^{\circ}\text{C}$, stable for 3 months under sterile conditions after opening. Please minimize freeze-thaw cycles.
Sequence	NKLENRKDIF QDIVKYHVKC DNEEIQKILK TREVYGKEPW ECEEEELAEI LQAELPDADK YEINKFHFS D LPLTELELVK CGIQMYVELK VVDKFKHIPQE ALVRFMYSLS KGYRKITYHN WRHGFNVGQT MFSLLVTGKL KRYFTDLEAL AMVTAAFCHD IDHRGTNNLY QMKSQNPLAK LHGSSILERH HLEFGKTLR DESLNIFQNL NRRQHEHAIH MMDIAIIATD LALYFKKRTM FQKIVDQSKT YESEQEWTQY MMLEQTRKEI VMAMMMTACD LSAITKPWEV QSQVALLVAA EFWEQGDLER TVLQQNPIPM MDRNKADELP KLQVGFIDFV CTFVYKEFSR FHEEITPMLD GITNNRKEWK ALADEYDAKM KVQEEKKQKQ

image



Background

Alternative Names Rod cGMP-specific 3',5'-cyclic phosphodiesterase subunit alpha (GMP-PDE)

Product Name: Recombinant Human PDE6A Protein
Catalog #: PEH8283



alpha) (EC 3.1.4.35) (PDE V-B1)

Note

For Research Use Only , Not for Diagnostic Use