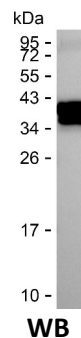
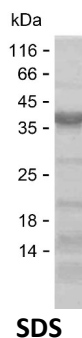


Summary

Name	MTFR1_HUMAN
Purity	Greater than 85% as determined by reducing SDS-PAGE
Endotoxin level	Please contact with the lab for this information
Tag	C-His
Accession #	Q15390
Host	E.coli
Species	Human
Molecular Mass	31 kDa
Buffer	Lyophilized from Phosphate buffered saline
Shipping	The product is shipped on dry ice/polar packs. Upon receipt, store it immediately at the temperature listed below.
Stability&Storage	Store at $\leq -70^{\circ}\text{C}$, stable for 12 months after receipt. Store at $\leq -70^{\circ}\text{C}$, stable for 3 months under sterile conditions after opening. Please minimize freeze-thaw cycles.
Sequence	TEWSPSHPGE DAVASFADVG WVAKEEGECS ARLRTEVRSR PPLQDDLLFF EKAPSRQISL PDLSQEEPQL KTPALANEEA LQKICALENE LAALRAQIAK IVTQQEQQNL TAGDLDSTTF GTIPPHPPPP PPPLPPPALG LHQSTSAVDL IKERREKRAN AGKTLVKNNP KKPEMPNMLE ILKEMNSVKL RSVKRSEQDV KPKPVDATDP AALIAEALKK KFAYRYSDDS QDEVEKGIPK SESEATSERV LFGPHMLKPT

image



Background

Alternative Names	Mitochondrial fission regulator 1 (Chondrocyte protein with a poly-proline region)
--------------------------	--

Product Name: Recombinant Human MTFR1 Protein
Catalog #: PEH8207



Note

For Research Use Only , Not for Diagnostic Use