

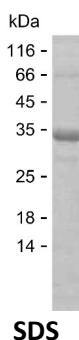
**Product Name: Recombinant Human MAGEC2 Protein**  
**Catalog #: PEH8201**



## Summary

|                              |  |
|------------------------------|--|
| <b>Name</b>                  | MAGC2_HUMAN  |
| <b>Purity</b>                | Greater than 85% as determined by reducing SDS-PAGE  |
| <b>Endotoxin level</b>       | Please contact with the lab for this information   |
| <b>Tag</b>                   | C-His  |
| <b>Accession #</b>           | Q9UBF1   |
| <b>Host</b>                  | E.coli   |
| <b>Species</b>               | Human  |
| <b>Molecular Mass</b>        | 28 kDa   |
| <b>Buffer</b>                | Phosphate buffered saline  |
| <b>Shipping</b>              | The product is shipped on dry ice/polar packs. Upon receipt, store it immediately at the temperature listed below.   |
| <b>Stability&amp;Storage</b> | Store at $\leq -70^{\circ}\text{C}$ , stable for 6 months after receipt. Store at $\leq -70^{\circ}\text{C}$ , stable for 3 months under sterile conditions after opening. Please minimize freeze-thaw cycles.   |
| <b>Sequence</b>              | GEDTGTCQGL PDESSFTYT LDEKVAELVE FLLKYEAE PVTEAEMLMI<br>VIKYKDYFPV ILKRAREFME LLFGLALIEV GPDHFCVFAN TVGLTDEGSD<br>DEGMPENSLI IILSVIFIK GNCASEEVIW EVLNAVGVYA GREHFVYGEP<br>RELLTKVWVQ GHYLEYREVP HSSPPYYEFL WGPRAHSESI KKKVLEFLAK<br>LNNTVPSSFP SWYKDALKDV EERVQATIDT |

## image



## Background

|                          |  |
|--------------------------|--|
| <b>Alternative Names</b> | Melanoma-associated antigen C2 (Cancer/testis antigen 10) (CT10) (Hepatocellular carcinoma-associated antigen 587) (MAGE-C2 antigen) (MAGE-E1 antigen) |
|--------------------------|--|

**Product Name: Recombinant Human MAGEC2 Protein**  
**Catalog #: PEH8201**



---

**Note**

For Research Use Only , Not for Diagnostic Use