

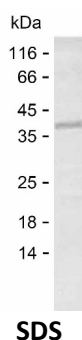
**Product Name: Recombinant Human DOT1L Protein**  
**Catalog #: PEH8177**



## Summary

<b>Name</b>	DOT1L_HUMAN
<b>Purity</b>	Greater than 85% as determined by reducing SDS-PAGE
<b>Endotoxin level</b>	Please contact with the lab for this information
<b>Tag</b>	C-His
<b>Accession #</b>	Q8TEK3
<b>Host</b>	E.coli
<b>Species</b>	Human
<b>Molecular Mass</b>	29 kDa
<b>Buffer</b>	Lyophilized from Phosphate buffered saline
<b>Shipping</b>	The product is shipped on dry ice/polar packs. Upon receipt, store it immediately at the temperature listed below.
<b>Stability&amp;Storage</b>	Store at $\leq -70^{\circ}\text{C}$ , stable for 12 months after receipt. Store at $\leq -70^{\circ}\text{C}$ , stable for 3 months under sterile conditions after opening. Please minimize freeze-thaw cycles.
<b>Sequence</b>	ARRRQQRESK SNAATPTKGP EGKVAGPADA PMDSGAEEEK AGAATVKKPS PSKARKKKLN KKGRKMAGRK RGRPCKMNTA NPERKPKKNQ TALDALHAQT VSQTAASSPQ DAYRSPHSPF YQLPPSVQRH SPNPLLVAPT PPALQKLLES FKIQYLQFLA YTKTPQYKAS LQELLGQEKE KNAQLLGAAQ QLLSHCQAQK EEIRRLFQQK LDELGVKALT YNDLIQAQKE ISAHNQLLRE

## image



## Background

<b>Alternative Names</b>	Histone-lysine N-methyltransferase, H3 lysine-79 specific (EC 2.1.1.360) (DOT1-like protein) (Histone H3-K79 methyltransferase) (H3-K79-HMTase) (Lysine N-methyltransferase 4)
--------------------------	--

**Product Name: Recombinant Human DOT1L Protein**  
**Catalog #: PEH8177**

---



**Note**

For Research Use Only , Not for Diagnostic Use