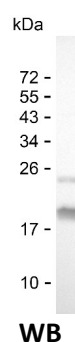
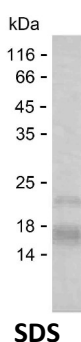


Summary

Name	KMT2D_HUMAN
Purity	Greater than 85% as determined by reducing SDS-PAGE
Endotoxin level	Please contact with the lab for this information
Tag	C-His
Accession #	O14686
Host	E.coli
Species	Human
Molecular Mass	13 kDa
Buffer	Phosphate buffered saline
Shipping	The product is shipped on dry ice/polar packs. Upon receipt, store it immediately at the temperature listed below.
Stability&Storage	Store at $\leq -70^{\circ}\text{C}$, stable for 6 months after receipt. Store at $\leq -70^{\circ}\text{C}$, stable for 3 months under sterile conditions after opening. Please minimize freeze-thaw cycles.
Sequence	KKKQRRGRK KSKLEDMFPA YLQEAFFGKE LLDLSRKALF AVGVGRPSFG LGTPKAKGDG GSERKELPTS QKGDDGPDIA DEESRGLEGK ADTPGPEDGG

image



Background

Alternative Names	Histone-lysine N-methyltransferase 2D (Lysine N-methyltransferase 2D) (EC 2.1.1.354) (ALL1-related protein) (Myeloid/lymphoid or mixed-lineage leukemia protein 2)
--------------------------	--

Note

For Research Use Only , Not for Diagnostic Use