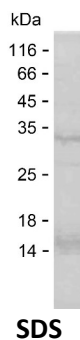


Summary

Name	PRI1_HUMAN
Purity	Greater than 85% as determined by reducing SDS-PAGE
Endotoxin level	Please contact with the lab for this information
Tag	C-His
Accession #	P49642
Host	E.coli
Species	Human
Molecular Mass	28 kDa
Buffer	Lyophilized from Phosphate buffered saline
Shipping	The product is shipped on dry ice/polar packs. Upon receipt, store it immediately at the temperature listed below.
Stability&Storage	Store at $\leq -70^{\circ}\text{C}$, stable for 12 months after receipt. Store at $\leq -70^{\circ}\text{C}$, stable for 3 months under sterile conditions after opening. Please minimize freeze-thaw cycles.
Sequence	KVHLSSEKIHP FIRKSINIIK KYFEEYALVN QDILENKESW DKILALVPET IHDELQQSFQ KSHNSLQRWE HLKKVASRYQ NNIKNDKYGP WLEWEIMLQY CFPRLDINVS KGINHLLKSP FSVHPKTGRI SVPIDLQKVD QFDPFTVPTI SFICRELDAL STNEEEKEEN EAESDVKHRT RDYKKTSLAP YVKVFEHFLE NLDKSRKGEL

image



Background

Alternative Names DNA primase small subunit (EC 2.7.7.-) (DNA primase 49 kDa subunit) (p49)

Note

Product Name: Recombinant Human PRIM1 Protein
Catalog #: PEH8133



For Research Use Only , Not for Diagnostic Use