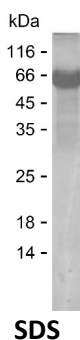


## Summary

<b>Name</b>	AL4A1_HUMAN
<b>Purity</b>	Greater than 85% as determined by reducing SDS-PAGE
<b>Endotoxin level</b>	Please contact with the lab for this information
<b>Tag</b>	C-His
<b>Accession #</b>	P30038
<b>Host</b>	E.coli
<b>Species</b>	Human
<b>Molecular Mass</b>	60 kDa
<b>Buffer</b>	Lyophilized from Phosphate buffered saline
<b>Shipping</b>	The product is shipped on dry ice/polar packs. Upon receipt, store it immediately at the temperature listed below.
<b>Stability&amp;Storage</b>	Store at $\leq -70^{\circ}\text{C}$ , stable for 12 months after receipt. Store at $\leq -70^{\circ}\text{C}$ , stable for 3 months under sterile conditions after opening. Please minimize freeze-thaw cycles.
<b>Sequence</b>	KVANEPVLAF TQGSPERDAL QKALKDLKGR MEAIPCVVGD EEVWTSDVQY QVSPFNHG HK VAKFCYADKS LLNKAIEAAL AARKEWDLKP IADRAQIFLK AADMLSGPRR AEILAKTMVG QGKTVIQAEI DAAAEIDIFF RFNAKYAVEL EGQQPISVPP STNSTVYRGL EGFVAAISPF NFTAIGGNLA GAPALMGNVV LWKPSDTAML ASYAVYRILR EAGLPPNIIQ FVPADGPLFG DTVTSSEHLC GINFTGSVPT FKHLWKQVAQ NLDRFHTFPR LAGECGGKNF HFVHRSADVE SVVSGTLRSA FEYGGQKCSA CSRLYVPHSL WPQIKGRILLE EHSRIKVGDP AEDFGTFFSA VIDA KSFARI KKWLEHARSS PSLTILAGGK CDDSVGYFVE PCIVESKDPQ EPIMKEEIFG PVLSVYVYPD DKYKETLQLV DSTTSYGLTG AVFSQDKDVV QEATKVL RNA AGNFYINDKS TGSIVGQQPF GGARASGTND KPGGPHYILR WTSPQVIKET HKPLGDWSYA

## image



## Background

**Product Name: Recombinant Human ALDH4A1 Protein**  
**Catalog #: PEH8129**



---

**Alternative Names**

Delta-1-pyrroline-5-carboxylate dehydrogenase, mitochondrial (P5C dehydrogenase) (EC 1.2.1.88) (Aldehyde dehydrogenase family 4 member A1) (L-glutamate gamma-semialdehyde dehydrogenase)

**Note**

For Research Use Only , Not for Diagnostic Use