

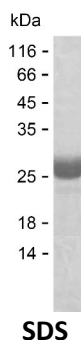
**Product Name: Recombinant Human CELF2 Protein**  
**Catalog #: PEH8112**



## Summary

<b>Name</b>	CELF2_HUMAN
<b>Purity</b>	Greater than 85% as determined by reducing SDS-PAGE
<b>Endotoxin level</b>	Please contact with the lab for this information
<b>Tag</b>	C-His
<b>Accession #</b>	O95319
<b>Host</b>	E.coli
<b>Species</b>	Human
<b>Molecular Mass</b>	24 kDa
<b>Buffer</b>	Phosphate buffered saline
<b>Shipping</b>	The product is shipped on dry ice/polar packs. Upon receipt, store it immediately at the temperature listed below.
<b>Stability&amp;Storage</b>	Store at $\leq -70^{\circ}\text{C}$ , stable for 6 months after receipt. Store at $\leq -70^{\circ}\text{C}$ , stable for 3 months under sterile conditions after opening. Please minimize freeze-thaw cycles.
<b>Sequence</b>	TANKMNGALD HSDQDPDAI KMFVGQIPRS WSEKELKELF EPYGAVYQIN VLRDRSQNPP QSKGCCFVTF YTRKAALAEQ NALHNIKTLP GMHHPIQMKP ADSEKSNAVE DRKLFIGMVS KKCENENDIRV MFSPFGQIEE CRILRGPDGL SRGCAVTFVS TRAMAQNAIK AMHQSQTMEG CSSPIVVKFA

## image



## Background

<b>Alternative Names</b>	CUGBP Elav-like family member 2 (CELF-2) (Bruno-like protein 3) (CUG triplet repeat RNA-binding protein 2) (CUG-BP2) (CUG-BP- and ETR-3-like factor 2) (ELAV-type RNA-binding protein 3) (ETR-3) (Neuroblastoma apoptosis-related RNA-binding protein) (hNAPOR) (RNA-binding protein BRUNOL-3)
--------------------------	--

**Product Name: Recombinant Human CELF2 Protein**  
**Catalog #: PEH8112**

---



**Note**

For Research Use Only , Not for Diagnostic Use