

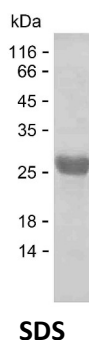
Product Name: Recombinant Human CPSF6 Protein
Catalog #: PEH8104



Summary

Name	CPSF6_HUMAN
Purity	Greater than 85% as determined by reducing SDS-PAGE
Endotoxin level	Please contact with the lab for this information
Tag	C-His
Accession #	Q16630
Host	E.coli
Species	Human
Molecular Mass	23 kDa
Buffer	Phosphate buffered saline
Shipping	The product is shipped on dry ice/polar packs. Upon receipt, store it immediately at the temperature listed below.
Stability&Storage	Store at $\leq -70^{\circ}\text{C}$, stable for 6 months after receipt. Store at $\leq -70^{\circ}\text{C}$, stable for 3 months under sterile conditions after opening. Please minimize freeze-thaw cycles.
Sequence	EA EYGGHDQI DLYDDVISPS ANNGDAPEDR DYMDTLPPTV GDDVGKGAAP NVVYTYTGKR IALYIGNLTW WTTDEDLTEA VHSLGVNDIL EIKFFENRAN GQSKGFALVG VGSEASSKKL MDLLPKRELH GQNPVVTPCN KQFLSQFEMQ SRKTTQSGQM SGEGKAGPPG GSSRAAFPQG GRGRGRFPGA

image



Background

Alternative Names	Cleavage and polyadenylation specificity factor subunit 6 (Cleavage and polyadenylation specificity factor 68 kDa subunit) (CPSF 68 kDa subunit) (Cleavage factor Im complex 68 kDa subunit) (CFIm68) (Pre-mRNA cleavage factor Im 68 kDa subunit) (Protein HPBRII-4/7)
--------------------------	---

Product Name: Recombinant Human CPSF6 Protein
Catalog #: PEH8104



Note

For Research Use Only , Not for Diagnostic Use