

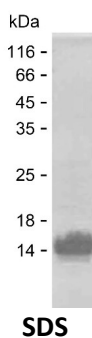
Product Name: Recombinant Human CERS2 Protein
Catalog #: PEH8100



Summary

Name	CERS2_HUMAN
Purity	Greater than 85% as determined by reducing SDS-PAGE
Endotoxin level	Please contact with the lab for this information
Tag	C-His
Accession #	Q96G23
Host	E.coli
Species	Human
Molecular Mass	7 kDa
Buffer	Lyophilized from Phosphate buffered saline
Shipping	The product is shipped on dry ice/polar packs. Upon receipt, store it immediately at the temperature listed below.
Stability&Storage	Store at $\leq -70^{\circ}\text{C}$, stable for 12 months after receipt. Store at $\leq -70^{\circ}\text{C}$, stable for 3 months under sterile conditions after opening. Please minimize freeze-thaw cycles.
Sequence	ITGKLVEDER SDREETESSE GEEAAAGGGA KSRPLANGHP ILNNNHRKND

image



Background

Alternative Names Ceramide synthase 2 (CerS2) (EC 2.3.1.-) (LAG1 longevity assurance homolog 2) (SP260) (Sphingosine N-acyltransferase CERS2) (EC 2.3.1.24) (Tumor metastasis-suppressor gene 1 protein)

Note

For Research Use Only , Not for Diagnostic Use