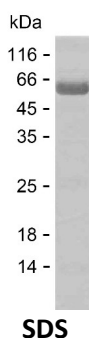


Summary

Name	ODO1_HUMAN
Purity	Greater than 85% as determined by reducing SDS-PAGE
Endotoxin level	Please contact with the lab for this information
Tag	N-MBP & C-His
Accession #	Q02218
Host	E.coli
Species	Human
Molecular Mass	65 kDa
Buffer	Phosphate buffered saline
Shipping	The product is shipped on dry ice/polar packs. Upon receipt, store it immediately at the temperature listed below.
Stability&Storage	Store at $\leq -70^{\circ}\text{C}$, stable for 6 months after receipt. Store at $\leq -70^{\circ}\text{C}$, stable for 3 months under sterile conditions after opening. Please minimize freeze-thaw cycles.
Sequence	QSLVEAQPNNV DKLVEDHLAV QSLIRAYQIR GHHVAQLDPL GILDADLDSS VPADIISSTD KLGFYGLDES DLDKVFLHPT TTFIGGQESA LPLREIIRRL EMAYCQHIGV EFMFINDLEQ CQWIRQKFET PGIMQFTNEE KRTLLARLVR STRFEEFLQR KWSSEKRFGLEGEVLLIPAL

image



Background

Alternative Names	2-oxoglutarate dehydrogenase, mitochondrial (EC 1.2.4.2) (2-oxoglutarate dehydrogenase complex component E1) (OGDC-E1) (Alpha-ketoglutarate dehydrogenase)
--------------------------	--

Note

Product Name: Recombinant Human OGDH Protein
Catalog #: PEH8058



For Research Use Only , Not for Diagnostic Use