

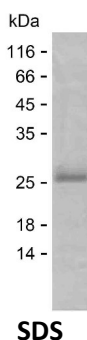
Product Name: Recombinant Human MAGED2 Protein
Catalog #: PEH8020



Summary

Name	MAGD2_HUMAN
Purity	Greater than 85% as determined by reducing SDS-PAGE
Endotoxin level	Please contact with the lab for this information
Tag	C-His
Accession #	Q9UNF1
Host	E.coli
Species	Human
Molecular Mass	15 kDa
Buffer	Lyophilized from Phosphate buffered saline
Shipping	The product is shipped on dry ice/polar packs. Upon receipt, store it immediately at the temperature listed below.
Stability&Storage	Store at $\leq -70^{\circ}\text{C}$, stable for 12 months after receipt. Store at $\leq -70^{\circ}\text{C}$, stable for 3 months under sterile conditions after opening. Please minimize freeze-thaw cycles.
Sequence	ADPQAVTMPA TETKKVSHVA DTKVNTKAQE TEAAPSQAPA DEPEPESAAA QSQENQDTRP KVKAKKARKV KHLDGEEEDGS SDQSQASGTT GGRRVSKALM ASMARRASRG PIAFWARRAS

image



Background

Alternative Names	Melanoma-associated antigen D2 (11B6) (Breast cancer-associated gene 1 protein) (BCG-1) (Hepatocellular carcinoma-associated protein JCL-1) (MAGE-D2 antigen)
--------------------------	---

Note

For Research Use Only , Not for Diagnostic Use

Product Name: Recombinant Human MAGED2 Protein
Catalog #: PEH8020

