

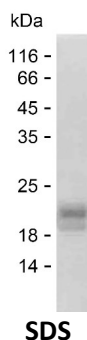
Product Name: Recombinant Human KLF15 Protein
Catalog #: PEH8000



Summary

Name	KLF15_HUMAN
Purity	Greater than 85% as determined by reducing SDS-PAGE
Endotoxin level	Please contact with the lab for this information
Tag	C-His
Accession #	Q9UIH9
Host	E.coli
Species	Human
Molecular Mass	14 kDa
Buffer	Lyophilized from Phosphate buffered saline
Shipping	The product is shipped on dry ice/polar packs. Upon receipt, store it immediately at the temperature listed below.
Stability&Storage	Store at $\leq -70^{\circ}\text{C}$, stable for 12 months after receipt. Store at $\leq -70^{\circ}\text{C}$, stable for 3 months under sterile conditions after opening. Please minimize freeze-thaw cycles.
Sequence	LEEIEEFLEE NMEPGVKEVP EGNSKDLDAC SQLSAGPHKS HLHPGSSGRE RCSPPPGGAS AGGAQGPGGG PTPDGPIPVL LQIQPVPVKQ ESGTGPA SPG QAPENVKVAQ

image



Background

Alternative Names Krueppel-like factor 15 (Kidney-enriched krueppel-like factor)

Note

For Research Use Only , Not for Diagnostic Use