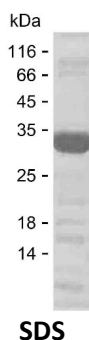


Summary

Name	B2L12_HUMAN
Purity	Greater than 85% as determined by reducing SDS-PAGE
Endotoxin level	Please contact with the lab for this information
Tag	N-SUMO & C-His
Accession #	Q9HB09
Host	E.coli
Species	Human
Molecular Mass	29 kDa
Buffer	Lyophilized from Phosphate buffered saline
Shipping	The product is shipped on dry ice/polar packs. Upon receipt, store it immediately at the temperature listed below.
Stability&Storage	Store at $\leq -70^{\circ}\text{C}$, stable for 12 months after receipt. Store at $\leq -70^{\circ}\text{C}$, stable for 3 months under sterile conditions after opening. Please minimize freeze-thaw cycles.
Sequence	PGASMAGSEE LGLREDTLRV LAAFLRRGEA AGSPVPTPPR SPAQEEPTDF LSRLRRCLPC SLGRGAAPSE SPRPCSLPIR PCYGLEPGPA TPDFYALVAQ RLEQLVQEQL KSPSPPELQG PPSTEKEAIL RRLVALLEEE AEVINQKLAS

image



Background

Alternative Names Bcl-2-like protein 12 (Bcl2-L-12) (Bcl-2-related proline-rich protein)

Note

For Research Use Only , Not for Diagnostic Use