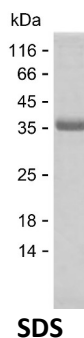


Summary

Name	CAR14_HUMAN
Purity	Greater than 85% as determined by reducing SDS-PAGE
Endotoxin level	Please contact with the lab for this information
Tag	C-His
Accession #	Q9BXL6
Host	E.coli
Species	Human
Molecular Mass	36 kDa
Buffer	Lyophilized from Phosphate buffered saline
Shipping	The product is shipped on dry ice/polar packs. Upon receipt, store it immediately at the temperature listed below.
Stability&Storage	Store at $\leq -70^{\circ}\text{C}$, stable for 12 months after receipt. Store at $\leq -70^{\circ}\text{C}$, stable for 3 months under sterile conditions after opening. Please minimize freeze-thaw cycles.
Sequence	DFSNFSGLME TSKLTECLAG AIGSLQEELN QEKGQKEVLL RRCQQLQEHL GLAETRAEGL HQLEADHSRM KREVSAHFHE VLRLKDEMLS LSLHYSNALQ EKELAASRCR SLQEELYLLK QELQRANMVS SCELELQEQS LRTASDQESG DEELNRLKEE NEKLRSLTFS LAEKDILEQS LDEARGSRQE LVERIHSLRE RAVAAERQRE QYWEEKEQTL LQFQKSKMAC QLYREKVNAL QAQVCELQKE RDQAYSARDS AQREISQSLV EKDSLRRQVF ELTDQVCELR TQLRQLQAEF

image



Background

Alternative Names	Caspase recruitment domain-containing protein 14 (CARD-containing MAGUK protein 2) (Carma 2)
--------------------------	--

Product Name: Recombinant Human CARD14 Protein
Catalog #: PEH7910



Note

For Research Use Only , Not for Diagnostic Use