

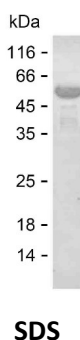
**Product Name: Recombinant Human NAP1L4 Protein**  
**Catalog #: PEH7885**



## Summary

|                              |   |
|------------------------------|---|
| <b>Name</b>                  | NP1L4_HUMAN   |
| <b>Purity</b>                | Greater than 85% as determined by reducing SDS-PAGE   |
| <b>Endotoxin level</b>       | Please contact with the lab for this information  |
| <b>Tag</b>                   | C-His   |
| <b>Accession #</b>           | Q99733  |
| <b>Host</b>                  | E.coli  |
| <b>Species</b>               | Human   |
| <b>Molecular Mass</b>        | 44 kDa  |
| <b>Buffer</b>                | Lyophilized from Phosphate buffered saline  |
| <b>Shipping</b>              | The product is shipped on dry ice/polar packs. Upon receipt, store it immediately at the temperature listed below.  |
| <b>Stability&amp;Storage</b> | Store at $\leq -70^{\circ}\text{C}$ , stable for 12 months after receipt. Store at $\leq -70^{\circ}\text{C}$ , stable for 3 months under sterile conditions after opening. Please minimize freeze-thaw cycles.   |
| <b>Sequence</b>              | MADHSFSDGV PSDSVEAAKN ASNTEKLTQ VMQNPRVLAA LQERLDNVPH<br>TPSSYIETLP KAVKRRINAL KQLQVRCAHI EAKFYEEVHD LERKYAALYQ<br>PLFDKRREFI TGDVEPTDAE SEWHSNEEEE EKLADGMKSK VVVTEKAAAT<br>AEEPDPKGIP EFWFTIFRNV DMLSELVQEY DEPILKHLQD IKVKFSDPGQ<br>PMSFVLEHFH EPNDYFTNSV LTKTYKMKSE PDKADPFSFE GPEIVDCDGC<br>TIDWKKGKNV TVKTIKKKQK HKGRGTVRTI TKQVPNESFF NFFNPLKASG<br>DGESLDEDSE FTLASDFEIG HFFRERIVPR AVLYFTGEAI EDDDNFEEGE<br>EGEEEELEGD EGEDEDDAE INPKV |

## image



## Background

**Alternative Names** Nucleosome assembly protein 1-like 4 (Nucleosome assembly protein 2)

**Product Name: Recombinant Human NAP1L4 Protein**  
**Catalog #: PEH7885**



---

(NAP-2)

**Note**

For Research Use Only , Not for Diagnostic Use