

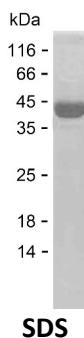
**Product Name: Recombinant Human AP2M1 Protein**  
**Catalog #: PEH7855**



## Summary

<b>Name</b>	AP2M1_HUMAN
<b>Purity</b>	Greater than 85% as determined by reducing SDS-PAGE
<b>Endotoxin level</b>	Please contact with the lab for this information
<b>Tag</b>	N-His
<b>Accession #</b>	Q96CW1
<b>Host</b>	E.coli
<b>Species</b>	Human
<b>Molecular Mass</b>	37 kDa
<b>Buffer</b>	Lyophilized from Phosphate buffered saline
<b>Shipping</b>	The product is shipped on dry ice/polar packs. Upon receipt, store it immediately at the temperature listed below.
<b>Stability&amp;Storage</b>	Store at $\leq -70^{\circ}\text{C}$ , stable for 12 months after receipt. Store at $\leq -70^{\circ}\text{C}$ , stable for 3 months under sterile conditions after opening. Please minimize freeze-thaw cycles.
<b>Sequence</b>	TFITQQGIKS QHQTKEEQSQ ITSQVTGQIG WRREGIKYRR NELFLDVLES VNLLMSPQGQ VLSAHVSGRV VMKSYLSGMP ECKFGMNDKI VIEKQGKGTA DETSKSGKQS IAIDDCTFHQ CVRLSKFDSE RSISFIPPDG EFELMRYRTT KDIILPFRVI PLVREVGRTK LEVKVVIKSN FKPSLLAQKI EVRIPTPLNT SGVQVICMKG KAKYKASENA IVWKIKRMAG MKESQISAEI ELLPTNDKKK WARPPISMNF EVPFAPSGLK VRYLKVFEFK LNYSDDHVIK WVRYIGRSGI

## image



## Background

<b>Alternative Names</b>	AP-2 complex subunit mu (AP-2 mu chain) (Adaptin-mu2) (Adaptor protein complex AP-2 subunit mu) (Adaptor-related protein complex 2 subunit mu) (Clathrin assembly protein complex 2 mu medium chain) (Clathrin coat
--------------------------	---

**Product Name: Recombinant Human AP2M1 Protein**  
**Catalog #: PEH7855**



---

assembly protein AP50) (Clathrin coat-associated protein AP50) (HA2 50 kDa subunit) (Plasma membrane adaptor AP-2 50 kDa protein)

**Note**

For Research Use Only , Not for Diagnostic Use