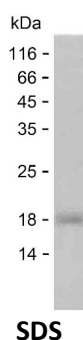


Summary

Name	OTUL_HUMAN
Purity	Greater than 85% as determined by reducing SDS-PAGE
Endotoxin level	Please contact with the lab for this information
Tag	C-His
Accession #	Q96BN8
Host	E.coli
Species	Human
Molecular Mass	12 kDa
Buffer	Phosphate buffered saline
Shipping	The product is shipped on dry ice/polar packs. Upon receipt, store it immediately at the temperature listed below.
Stability&Storage	Store at $\leq -70^{\circ}\text{C}$, stable for 6 months after receipt. Store at $\leq -70^{\circ}\text{C}$, stable for 3 months under sterile conditions after opening. Please minimize freeze-thaw cycles.
Sequence	AWPGASCAET PAREAAATAR DGGKAAASGQ PRPEMQCPAE HEEDMYRAAD EIEKEKELLI HERGASEPRL SVAPEMDIMD YCKKEWRGNT

image



Background

Alternative Names	Ubiquitin thioesterase otulin (EC 3.4.19.12) (Deubiquitinating enzyme otulin) (OTU domain-containing deubiquitinase with linear linkage specificity) (Ubiquitin thioesterase Gumby)
--------------------------	-------------------------------------------------------------------------------------------------------------------------------------------------------------------------------------

Note

For Research Use Only , Not for Diagnostic Use