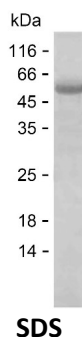


Summary

Name	CRLF3_HUMAN
Purity	Greater than 85% as determined by reducing SDS-PAGE
Endotoxin level	Please contact with the lab for this information
Tag	C-His
Accession #	Q8IU18
Host	E.coli
Species	Human
Molecular Mass	51 kDa
Buffer	Lyophilized from Phosphate buffered saline
Shipping	The product is shipped on dry ice/polar packs. Upon receipt, store it immediately at the temperature listed below.
Stability&Storage	Store at $\leq -70^{\circ}\text{C}$, stable for 12 months after receipt. Store at $\leq -70^{\circ}\text{C}$, stable for 3 months under sterile conditions after opening. Please minimize freeze-thaw cycles.
Sequence	MRGAMELEPE LLLQEARENV EAAQSYRREL GHRLEGLREA RRQIKESASQ TRDVLKQHFN DLKGTGKLL DERLVTLLQE VDTIEQETIK PLDDCQKLIE HGVNTAEDLV REGEIAMLGG VGEENEKLWS FTKKASHIQL DSLPEVPLLV DVPCLSAQLD DSILNIVKDH IFKHGTVASR PPVQIEELIE KPGGIIVRWC KVDDDFTAQD YRLQFRKCTS NHFEDVYVGS ETEFIVLHID PNVDYQFRVC ARGDGRQEWS PWSVPQIGHS TLPHEWTAG FEGYSLSSRR NIALRNDSQ SGVLYSRAPT YFCGQTLTFR VETVGQPD RR DSIGVCAEKQ DGYDSLQRDQ AVCISTNGAV FVNGKEMTNQ LPAVTSGSTV TFDIEAVTLG TTSNNEGGHF KLRVTISSNN REVVFDWLLD QSCGSLYFGC SFFYPGWKVL VF

image



Background

Product Name: Recombinant Human CRLF3 Protein
Catalog #: PEH7791



Alternative Names

Cytokine receptor-like factor 3 (Cytokine receptor-like molecule 9)
(CREME-9) (Cytokine receptor-related protein 4) (Type I cytokine receptor-
like factor p48)

Note

For Research Use Only , Not for Diagnostic Use