

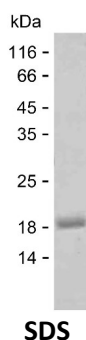
**Product Name: Recombinant Human TOM1L2 Protein**  
**Catalog #: PEH7769**



## Summary

<b>Name</b>	TM1L2_HUMAN
<b>Purity</b>	Greater than 85% as determined by reducing SDS-PAGE
<b>Endotoxin level</b>	Please contact with the lab for this information
<b>Tag</b>	C-His
<b>Accession #</b>	Q6ZVM7
<b>Host</b>	E.coli
<b>Species</b>	Human
<b>Molecular Mass</b>	16 kDa
<b>Buffer</b>	Phosphate buffered saline
<b>Shipping</b>	The product is shipped on dry ice/polar packs. Upon receipt, store it immediately at the temperature listed below.
<b>Stability&amp;Storage</b>	Store at $\leq -70^{\circ}\text{C}$ , stable for 6 months after receipt. Store at $\leq -70^{\circ}\text{C}$ , stable for 3 months under sterile conditions after opening. Please minimize freeze-thaw cycles.
<b>Sequence</b>	TGPITANSEQ IARLRSELDV VRGNTKVMSE MLTEMVPGQE DSSDLELLQE LNRTC RAMQQ RIVELISRVS NEEVTEELLH VNDDLNNVFL RYERFERYS GRSVQNASNG VLNEVTEDNL

## image



## Background

**Alternative Names** TOM1-like protein 2 (Target of Myb-like protein 2)

## Note

For Research Use Only , Not for Diagnostic Use