

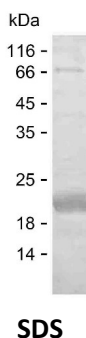
Product Name: Recombinant Human LGALSL Protein
Catalog #: PEH7736



Summary

Name	LEGL_HUMAN
Purity	Greater than 85% as determined by reducing SDS-PAGE
Endotoxin level	Please contact with the lab for this information
Tag	C-His
Accession #	Q3ZCW2
Host	E.coli
Species	Human
Molecular Mass	20 kDa
Buffer	Phosphate buffered saline
Shipping	The product is shipped on dry ice/polar packs. Upon receipt, store it immediately at the temperature listed below.
Stability&Storage	Store at $\leq -70^{\circ}\text{C}$, stable for 6 months after receipt. Store at $\leq -70^{\circ}\text{C}$, stable for 3 months under sterile conditions after opening. Please minimize freeze-thaw cycles.
Sequence	MAGSVADSDA VVKLDDGHLN NSLSSPVQAD VYFRLIVPF CGHIKGGMRP GKKVLVMGIV DLNPESFAIS LTCGDESDPP ADVAIELKAV FTDRQLLRNS CISGERGEEQ SAIPYFPFIP DQPFRVEILC EHPRFRVVD GHQLFDYHR IQTLSAIDTI KINGDLQITK LG

image



Background

Alternative Names Galectin-related protein (Galectin-like protein) (Lectin galactoside-binding-like protein)

Note

For Research Use Only , Not for Diagnostic Use

Product Name: Recombinant Human LGALS1 Protein
Catalog #: PEH7736

