

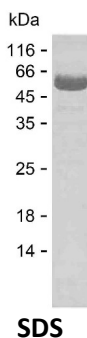
**Product Name: Recombinant Human IFIT5 Protein**  
**Catalog #: PEH7677**



## Summary

|                              |  |
|------------------------------|--|
| <b>Name</b>                  | IFIT5_HUMAN  |
| <b>Purity</b>                | Greater than 85% as determined by reducing SDS-PAGE  |
| <b>Endotoxin level</b>       | Please contact with the lab for this information   |
| <b>Tag</b>                   | C-His  |
| <b>Accession #</b>           | Q13325   |
| <b>Host</b>                  | E.coli   |
| <b>Species</b>               | Human  |
| <b>Molecular Mass</b>        | 57 kDa   |
| <b>Buffer</b>                | Lyophilized from Phosphate buffered saline   |
| <b>Shipping</b>              | The product is shipped on dry ice/polar packs. Upon receipt, store it immediately at the temperature listed below.   |
| <b>Stability&amp;Storage</b> | Store at $\leq -70^{\circ}\text{C}$ , stable for 12 months after receipt. Store at $\leq -70^{\circ}\text{C}$ , stable for 3 months under sterile conditions after opening. Please minimize freeze-thaw cycles.  |
| <b>Sequence</b>              | MSEIRKDTLK AILLELECHF TWNLLKEDID LFEVEDTIGQ QLEFLTTKSR<br>LALYNLLAYV KHLKGQNKDA LECLEQAEEI IQQEHSKKEE VRSLVTWGNV<br>AWVYYHMDQL EEAQKYTGKI GNVCKKLSSP SNYKLECPET DCEKGWALLK<br>FGGKYYQKAK AAFEKALEVE PDNPEFNIGY AITVYRLDDS DREGSVKSFS<br>LGPLRKAVTL NPDNSYIKVF LALKLQDVHA EAEGEKYIEE ILDQISSQPY<br>VLRVAAKFYR RKNSWNKALE LLKALEVTP TSSFLHHQMG LCYRAQMIQI<br>KKATHNRPKG KDKLKVDELI SSAIFHFCAA MERDSMFafa YTDLANMYAE<br>GGQYNAEDI FRKALRENI TDDHKHQIHY HYGRFQEFHR KSENTAIHHY<br>LEALKVKDRS PLRTKLTSAL KKLSTKRLCH NALDVQSLSA LGFVYKLEGE<br>KRQAAEYYEK AQKIDPENAE FLTALCELRL SI |

## image



## Background

**Product Name: Recombinant Human IFIT5 Protein**  
**Catalog #: PEH7677**



---

**Alternative Names**

Interferon-induced protein with tetratricopeptide repeats 5 (IFIT-5)  
(Interferon-induced 58 kDa protein) (Retinoic acid- and interferon-inducible  
58 kDa protein) (P58)

**Note**

For Research Use Only , Not for Diagnostic Use