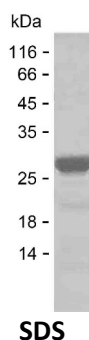


Summary

Name	RM28_HUMAN
Purity	Greater than 85% as determined by reducing SDS-PAGE
Endotoxin level	Please contact with the lab for this information
Tag	C-His
Accession #	Q13084
Host	E.coli
Species	Human
Molecular Mass	24 kDa
Buffer	Lyophilized from Phosphate buffered saline
Shipping	The product is shipped on dry ice/polar packs. Upon receipt, store it immediately at the temperature listed below.
Stability&Storage	Store at $\leq -70^{\circ}\text{C}$, stable for 12 months after receipt. Store at $\leq -70^{\circ}\text{C}$, stable for 3 months under sterile conditions after opening. Please minimize freeze-thaw cycles.
Sequence	NGQRERVEDV PIPIYFPPESE QRGLWGGEGW ILGQIYANND KLSKRLKKVW KPQLFEREFY SEILDKKFTV TVTMRTLDI DEAYGLDFYI LKTPKEDLCS KFGMDLKRGM LLRLARQDPQ LHPEDPERRA AIYDKYKEFA IPEEEAEWVG LTLEEAIEKQ RLLEEKDPVP LFKIYVAELI QQLQQQALSE PAVVQKRASG Q

image



Background

Alternative Names	39S ribosomal protein L28, mitochondrial (L28mt) (MRP-L28) (Melanoma antigen p15) (Melanoma-associated antigen recognized by T-lymphocytes) (Mitochondrial large ribosomal subunit protein bL28m)
--------------------------	---

Note

Product Name: Recombinant Human MRPL28 Protein
Catalog #: PEH7669



For Research Use Only , Not for Diagnostic Use