

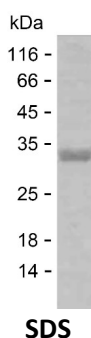
Product Name: Recombinant Human PDC Protein
Catalog #: PEH7500



Summary

| | |
|------------------------------|--|
| Name | PHOS_HUMAN |
| Purity | Greater than 85% as determined by reducing SDS-PAGE |
| Endotoxin level | Please contact with the lab for this information |
| Tag | C-His |
| Accession # | P20941 |
| Host | E.coli |
| Species | Human |
| Molecular Mass | 29 kDa |
| Buffer | Lyophilized from Phosphate buffered saline |
| Shipping | The product is shipped on dry ice/polar packs. Upon receipt, store it immediately at the temperature listed below. |
| Stability&Storage | Store at $\leq -70^{\circ}\text{C}$, stable for 12 months after receipt. Store at $\leq -70^{\circ}\text{C}$, stable for 3 months under sterile conditions after opening. Please minimize freeze-thaw cycles. |
| Sequence | MEEAKSQSLE EDFEGQATHT GPKGVIWDWR KFKLESQDSD SIPPSKKEIL RQMSSPQSRN GKDSKERVSR KMSIQEYELI HKEKEDENCL RKYRRQCMQD MHQKLSFGPR YGFVYELETG KQFLETIEKE LKITTIVVHI YEDGIKGCDA LNSSLTCLAA EYPIVKFCKI KASNTGAGDR FSLDVLPTLL IYKGGELISN FISVAEQFAE EFFAGDVESF LNEYGLLPER EVHVLEHTKI EEEDVE |

image



Background

Alternative Names Phosducin (PHD) (33 kDa phototransducing protein) (Protein MEKA)

Note

Product Name: Recombinant Human PDC Protein
Catalog #: PEH7500



For Research Use Only , Not for Diagnostic Use