

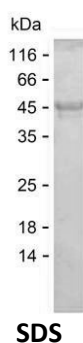
**Product Name: Recombinant Human DLAT Protein**  
**Catalog #: PEH7460**



## Summary

<b>Name</b>	ODP2_HUMAN
<b>Purity</b>	Greater than 85% as determined by reducing SDS-PAGE
<b>Endotoxin level</b>	Please contact with the lab for this information
<b>Tag</b>	C-His
<b>Accession #</b>	P10515
<b>Host</b>	E.coli
<b>Species</b>	Human
<b>Molecular Mass</b>	36 kDa
<b>Buffer</b>	Phosphate buffered saline
<b>Shipping</b>	The product is shipped on dry ice/polar packs. Upon receipt, store it immediately at the temperature listed below.
<b>Stability&amp;Storage</b>	Store at $\leq -70^{\circ}\text{C}$ , stable for 6 months after receipt. Store at $\leq -70^{\circ}\text{C}$ , stable for 3 months under sterile conditions after opening. Please minimize freeze-thaw cycles.
<b>Sequence</b>	HQKVPLPSLS PTMQAGTIAR WEKKEGDKIN EGDLIAEVET DKATVGFESL EECYMAKILV AEGTRDVPIG AIICITVGKP EDIEAFKNYT LDSSAAPTQ AAPAPTPAAT ASPPTPSAQA PGSSYPHMQ VLLPALSPTM TMGTVQRWEK KVGEKLSEGD LLAEIETDKA TIGFEVQEEG YLAKILVPEG TRDVPLGTPL CIIVEKEADI SAFADYRPTV VTDLKPQVPP PTPPPVAAVP PTPQPLAPTP SAPCPATPAG PKGRVFSVPL AKKLAVEKGI DLTQVKGTGP DGRITKDDID SFVPSKVAPA PAAVVPPTGP

## image



## Background

**Alternative Names** Dihydrolipoyllysine-residue acetyltransferase component of pyruvate dehydrogenase complex, mitochondrial (EC 2.3.1.12) (70 kDa mitochondrial)

**Product Name: Recombinant Human DLAT Protein**  
**Catalog #: PEH7460**



---

autoantigen of primary biliary cirrhosis) (PBC) (Dihydrolipoamide acetyltransferase component of pyruvate dehydrogenase complex) (M2 antigen complex 70 kDa subunit) (Pyruvate dehydrogenase complex component E2) (PDC-E2) (PDCE2)

**Note**

For Research Use Only , Not for Diagnostic Use