

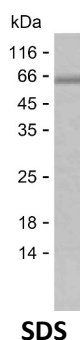
Product Name: Recombinant Human EML2 Protein
Catalog #: PEH7430



Summary

Name	EMAL2_HUMAN
Purity	Greater than 85% as determined by reducing SDS-PAGE
Endotoxin level	Please contact with the lab for this information
Tag	N-MBP & C-His
Accession #	O95834
Host	E.coli
Species	Human
Molecular Mass	68 kDa
Buffer	Phosphate buffered saline
Shipping	The product is shipped on dry ice/polar packs. Upon receipt, store it immediately at the temperature listed below.
Stability&Storage	Store at $\leq -70^{\circ}\text{C}$, stable for 6 months after receipt. Store at $\leq -70^{\circ}\text{C}$, stable for 3 months under sterile conditions after opening. Please minimize freeze-thaw cycles.
Sequence	NGGNLLCAVD ESNDHMLSVW DWAKETKVVD VKCSNEAVLV ATFHPTDPTV LITCGKSHIY FWTLEGGSL S KRQGLFEKHE KPKYVLCVTF LEGGDVVTGD SGGNLYVWGK GGNRITQAVL GAHDGGVFGL CALRDGTLVS GGRDRRVVL WGSYDYSKLQE VEPEDFGPV RTVAEGHGDT LYVGTTRNSI LQGSVHTGFS LLVQGHVEEL WGLATHPSRA QFVTCGQDKL

image



Background

Alternative Names Echinoderm microtubule-associated protein-like 2 (EMAP-2) (HuEMAP-2)

Note

Product Name: Recombinant Human EML2 Protein
Catalog #: PEH7430



For Research Use Only , Not for Diagnostic Use