

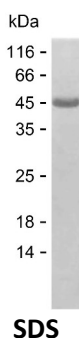
**Product Name: Recombinant Human SEC14L2 Protein**  
**Catalog #: PEH7417**



## Summary

<b>Name</b>	S14L2_HUMAN
<b>Purity</b>	Greater than 85% as determined by reducing SDS-PAGE
<b>Endotoxin level</b>	Please contact with the lab for this information
<b>Tag</b>	C-His
<b>Accession #</b>	O76054
<b>Host</b>	E.coli
<b>Species</b>	Human
<b>Molecular Mass</b>	47 kDa
<b>Buffer</b>	Lyophilized from Phosphate buffered saline
<b>Shipping</b>	The product is shipped on dry ice/polar packs. Upon receipt, store it immediately at the temperature listed below.
<b>Stability&amp;Storage</b>	Store at $\leq -70^{\circ}\text{C}$ , stable for 12 months after receipt. Store at $\leq -70^{\circ}\text{C}$ , stable for 3 months under sterile conditions after opening. Please minimize freeze-thaw cycles.
<b>Sequence</b>	MSGRVGDLSP RQKEALAKFR ENVQDVLPAL PNPDDYFLLR WLRARSFDLQ KSEAMLRKHV EFRKQKDIDN IISWQPPEVI QQYLSGGMCG YLDGCPVWY DIIGPLDAKG LLFSASKQDL LRTKMRECEL LLQECAHQTT KLGRKVETIT IIYDCEGLGL KHLWKPAVEA YGEFLCMFEE NYPETLKRLF VVKAPKLPV AYNLIKPFSL EDTRKKIMVL GANWKEVLLK HISPQVPVE YGGTMTDPDG NPKCKSKINY GGDIPRKYV RDQVKQYEH SVQISRGSSH QVEYEILFPG CVLRWQFMSD GADVGFIFL KTKMGERQRA GEMTEVLPNQ RYNSHLVPED GTLTCSDPGI YVLRFDNTYS FIHAKKNFT VEVLLPKAS EEKMKQLGAG TPK

## image



## Background

**Alternative Names** SEC14-like protein 2 (Alpha-tocopherol-associated protein) (TAP) (hTAP)

**Product Name: Recombinant Human SEC14L2 Protein**  
**Catalog #: PEH7417**



---

(Squalene transfer protein) (Supernatant protein factor) (SPF)

**Note**

For Research Use Only , Not for Diagnostic Use